



Gresham Road, Brixton, SW9

2 bedroom flat to let

£496 Per Week

Furnished

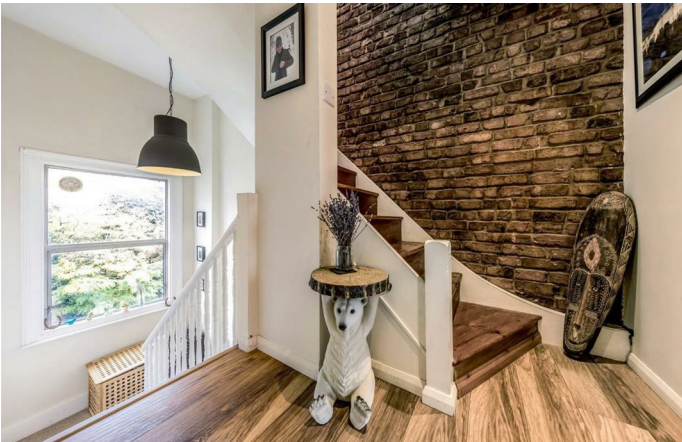
Property Details

A newly refurbished split level two bedroom Victorian Conversion flat right in the heart of thriving, bustling Brixton. You can't beat the location being within three minutes walking distance to both Brixton stations and just around the corner from the foodie mecca of Pop Brixton, Market Row, and Brixton Village. The flat is split into two levels the first level boasts a spacious reception room with space for a dining area perfect for entertaining guests, a separate modern kitchen and the first double bedroom with built-in wardrobe space and a modern sleek shower room. On the second level, space is the other large double bedroom. It has three huge skylights flooding the room with natural light.

Council tax band B EPC rating C (72)

Features

- Two double bedrooms
- Bright and airy throughout
- Close to transport links
- Stylish split level flat
- Close to central Brixton
- Separate reception
- Newly refurbished



Gresham Road, Brixton, SW9



2 Bed flat

Approx internal area:

949 sqft 88 sqm

While we do try our very best, floor plans are produced as a guide only and we take no responsibility for the precise accuracy with which any property is represented

Gresham Road



Gresham Road, Brixton, SW9

